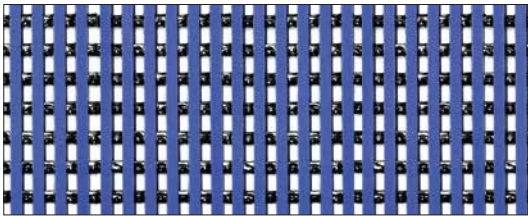


Wet Area Mat

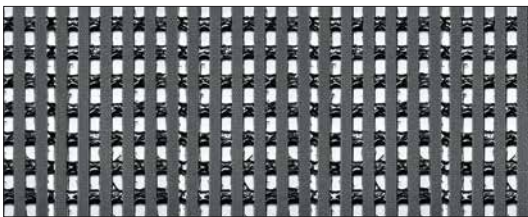


PVC Anti-slip Mat

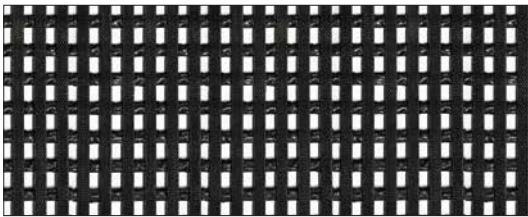
(W : 1.16m L : 10m, Thickness : 9mm)



Anti-Slip Blue



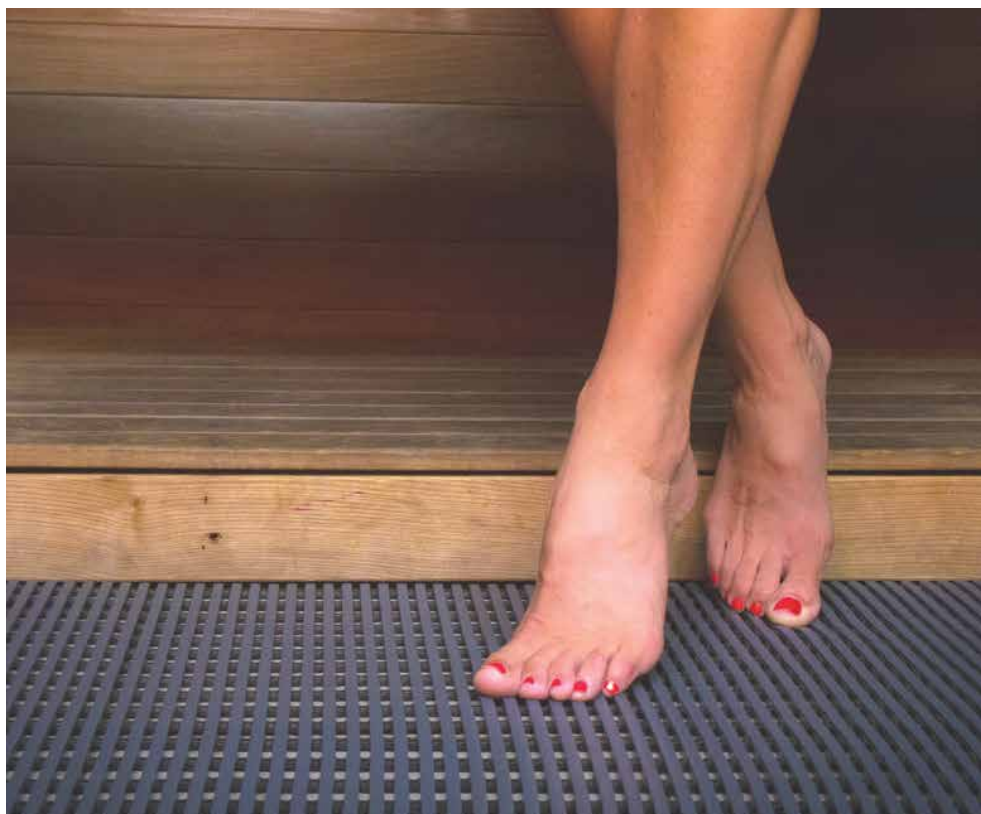
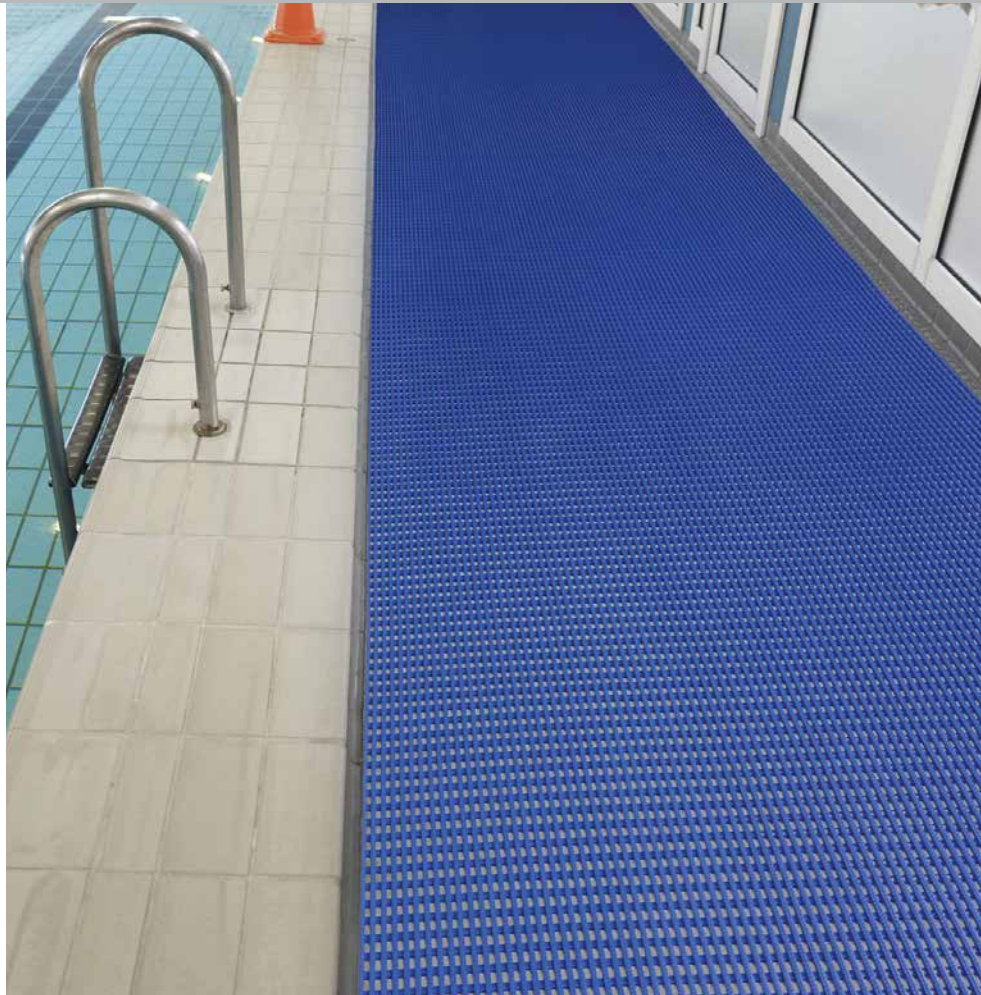
Anti-Slip Grey



Anti-Slip Black



- ◆ Strong and flexible PVC matting, resistant to chlorine, salt water & oils
- ◆ Superior 4-way drainage system and anti-slip properties conforming to Slip Resistance Test DIN 51097 Classification A, B & C
- ◆ Sanitised® anti-bacterial and anti-fungal additives provide continuous protection in areas with increased bare skin on mat contact
- ◆ Low maintenance and highly manoeuvrable for easy installation and reapplication
- ◆ Suitable for indoor and outdoor use

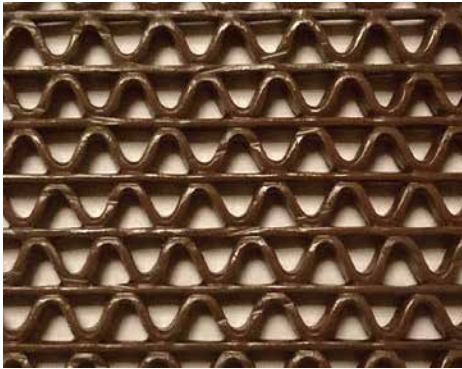


Wet Area Mat

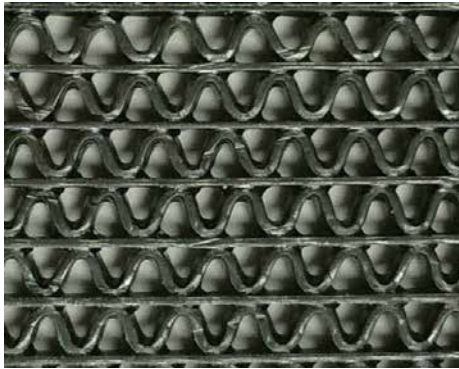


PVC Floot Mat S Type

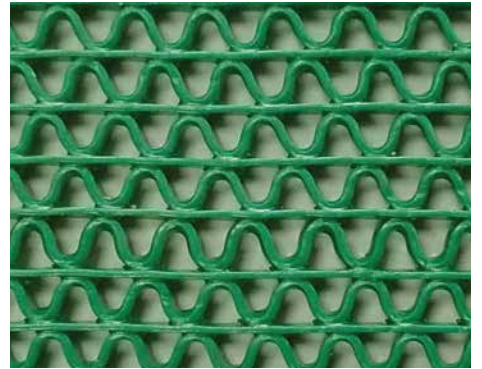
(W : 1.2m L : 15m, Thickness : 5mm)



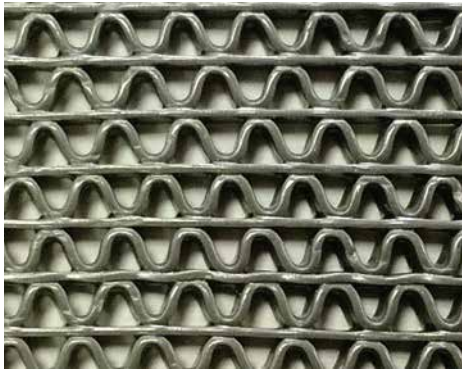
S Type Brown



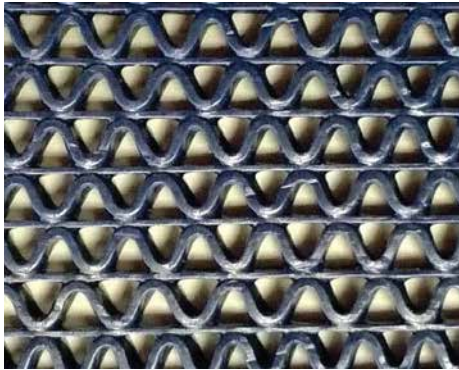
S Type Black



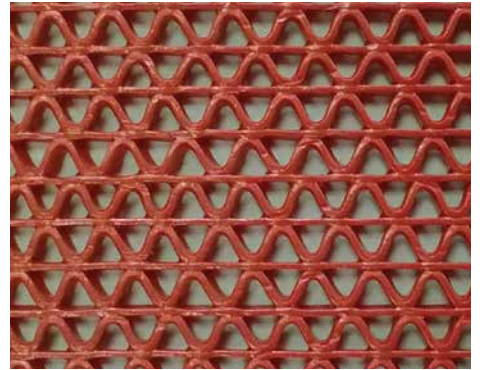
S Type Green



S Type Grey



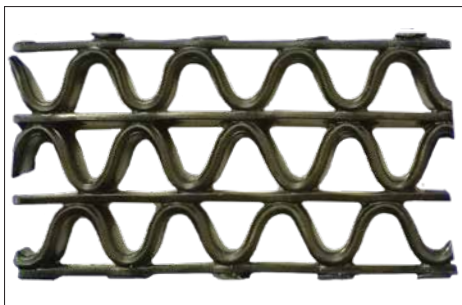
S Type Blue



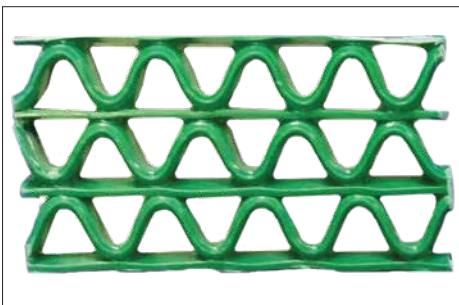
S Type Red

PVC Floot Mat Z Type

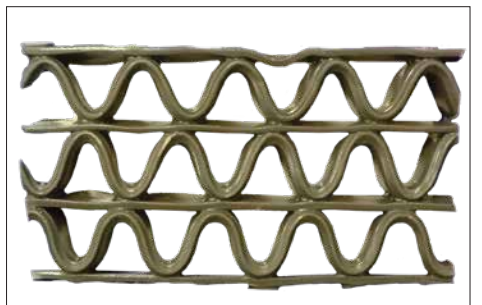
(W : 1.2m L : 12m, Thickness : 8mm)



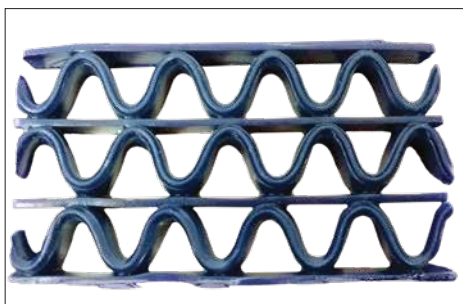
Z Type Black



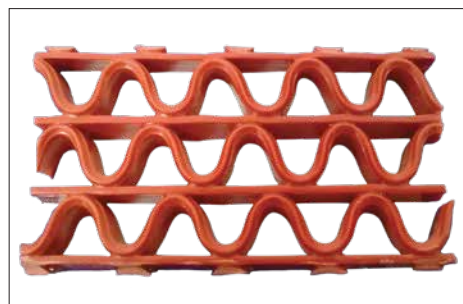
Z Type Green



Z Type Grey



Z Type Blue



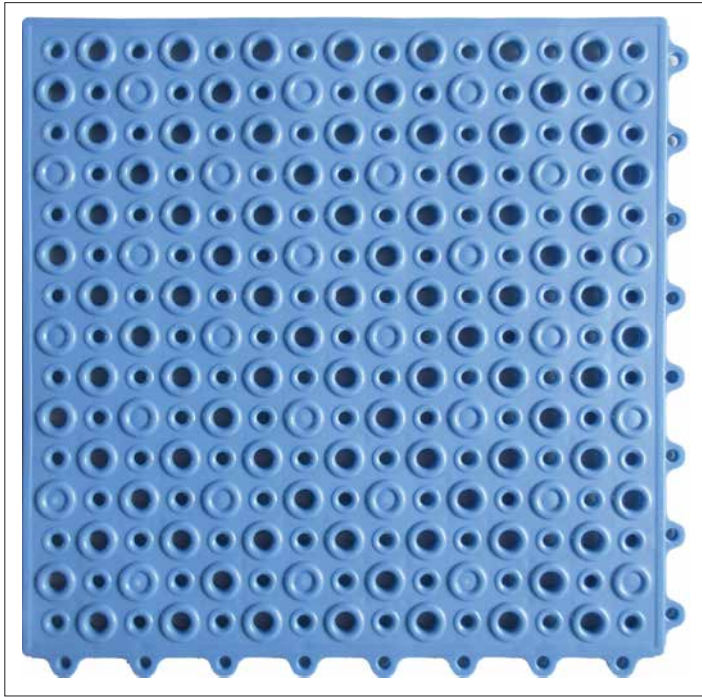
Z Type Red

Wet Area Mat

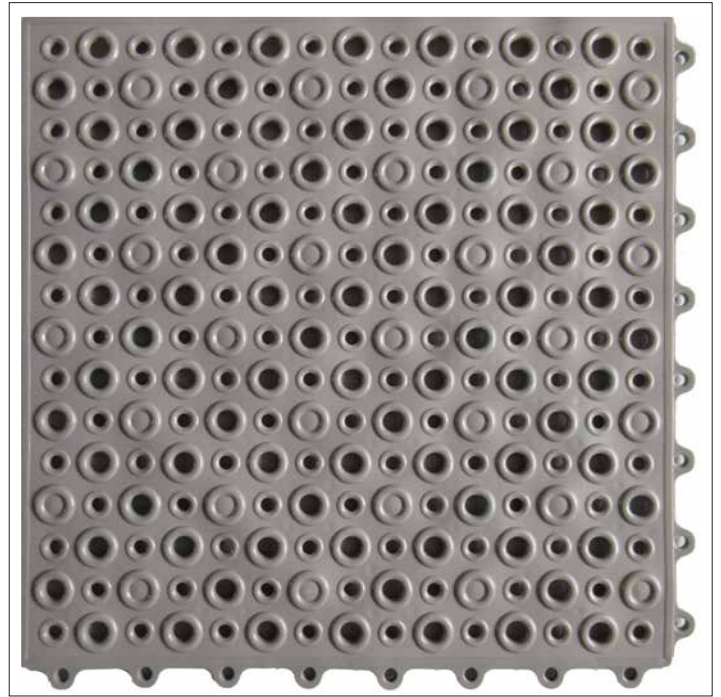


SPLICE PAD Interlock Deck Tiles

(W : 30cm L : 30 , Thickness : 10mm)



Deck Tile Blue



Deck Tile Grey



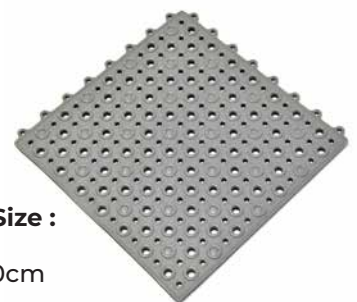
Hydrophobic design, increase friction
Quick drainage without water accumulation



Three-dimensional cylinder, no water

Non-slip suction cup, strong adsorption

- Mold & mildew resistant
- Resists most chemicals
- Non-slip material
- Comfortable
- Suitable for various placements
- Easy to install & remove



Deck Size :

30 x 30cm

1 Box contains :

6 pcs, Covering 0.54 m2 area

Wet Area Mat



Install in a snap!

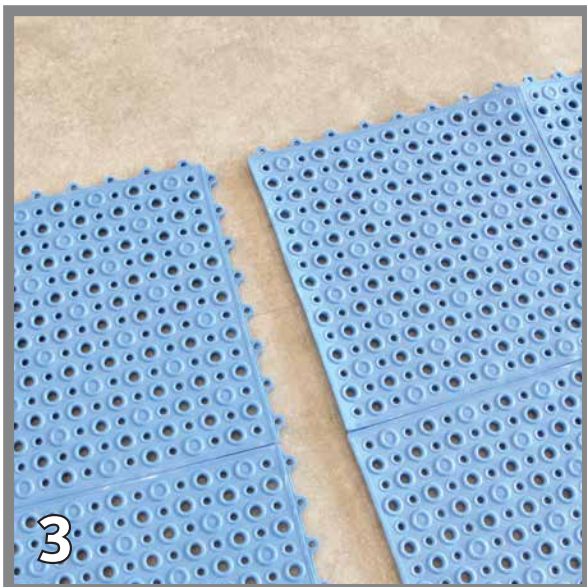
Tools required: Utility Knife & Hammer



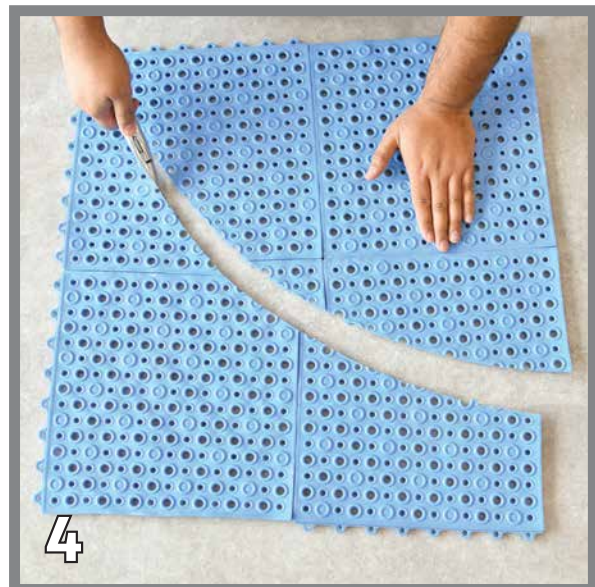
Put tiles on hard and flat surface. Overlap and underlap the pegs and holes to adjoin tiles.



Use hammer to knock each connection point to tighten all the joints.



Join the tiles horizontally & vertically until they cover your desired area.



Cut the tiles' edge using utility knife to get more precise covering.

Suitable for : Bathroom, shower room, garage, terrace, shed, attic, cellar, indoor swimming pool, stair landing, workshop, patio, laundry room, balcony, boat, etc.